

Featured Project

Site Lighting

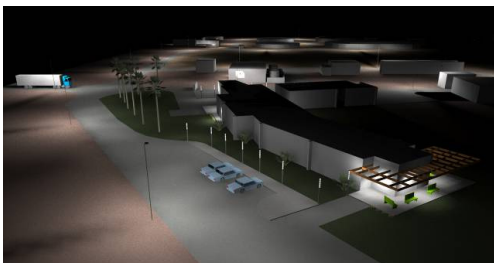
Site lighting and building exterior lighting comprise a critical component of architectural projects.

ArcSine Engineering is continually awarded projects based solely on our lighting design expertise. It is not uncommon for other firms' designs to simply meet some minimum lighting level metric. But for lighting, the metrics are only a small part of the story. The lighting system is the paintbrush that exposes the lit environment to human experience. ArcSine's lighting design experts differentiate our design products by considering not only the human experience of the lit environment, but also LEED requirements, initial capital costs, operations and maintenance costs, maintainability, and dark-sky and energy compliance requirements. ArcSine uses advanced lighting design software to provide our clients computer-generated three-dimensional renderings of the finished project during design; helping our client's to visualize the finished product.

Our lighting designs are further enhanced by our electrical engineering experience, allowing our lighting designs to seamlessly integrate into the power distribution and controls design for each project.

Below is a partial list of ArcSine's site lighting projects:

- U.S. Cellular Sports Park, Medford, OR
- Burney Falls Memorial Park Amphitheater, Burney, CA
- Hilltop Inn, Redding, CA
- Discovery Village, Redding, CA
- Market & Yuba Streets, Redding, CA
- Petaluma Water Treatment Facility, Petaluma, CA
- Cypress Avenue Safeway Plaza, Redding, CA
- "K" Street Streetscape Project, Sacramento, CA
- White City Street Lighting, White City, OR



Design Completion Date

On-going

Construction Completion Date

On-going

**Electrical
Lighting
Power Distribution
Construction Services
Site Lighting**

